

# Alaska Department of Fish and Game

Habitat Section  
Southeast Region



## 114-31-10130 Tributary 1

## ADDITION

**Water body name:**

**Survey date:** 7/14/2022; 9/8/2022

**Quad:** Juneau A-5

**Species & Lifestage:**

**Upper Reach Latitude:** 58.073137 **Longitude:** -135.477285

**Survey crew:** FC, RR

**Lower Reach Latitude:** 58.074547 **Longitude:** -135.479002

**Findings:** We surveyed this uncataloged stream using a baited minnow traps and GPS and captured juvenile coho salmon. The tributary stream flows underneath a log-stringer bridge and over a beaver dam downstream near the confluence where it meets the main channel (Table 1; Figures 1–3).

**Recommendations:** Add this uncataloged stream to the anadromous waters catalog for rearing coho salmon (Figure 4).

**Nomination:** Pending

Table 1.—114-31-10130 tributary 1 survey data.

Waypoint	Latitude	Longitude	Notes	Stream Width ft	Stream Substrate	Habitat Features	Gradient %	Sample Effort	Sample Results
1058	58.074546	-135.479079	Tributary on river-right with a 3' beaver dam.						
1695	58.073152	-135.477315	Log bridge at stream crossing. Bridge in seemingly good condition; river-left abutment somewhat eroded. Large log fall just downstream of bridge, unsure if it is from log bridge, covered in vegetation. Minnow trap soaked just downstream.	4-6	Fine Organic Small Gravel		2-4	MT	8 CO



Figure 1.—Juvenile coho salmon captured at waypoint 1695.



Figure 2.—Confluence of tributary 1 and Stream No. 114-31-10130 at waypoint 1058.



Figure 3.—Channel underneath log-stringer bridge at waypoint 1695.



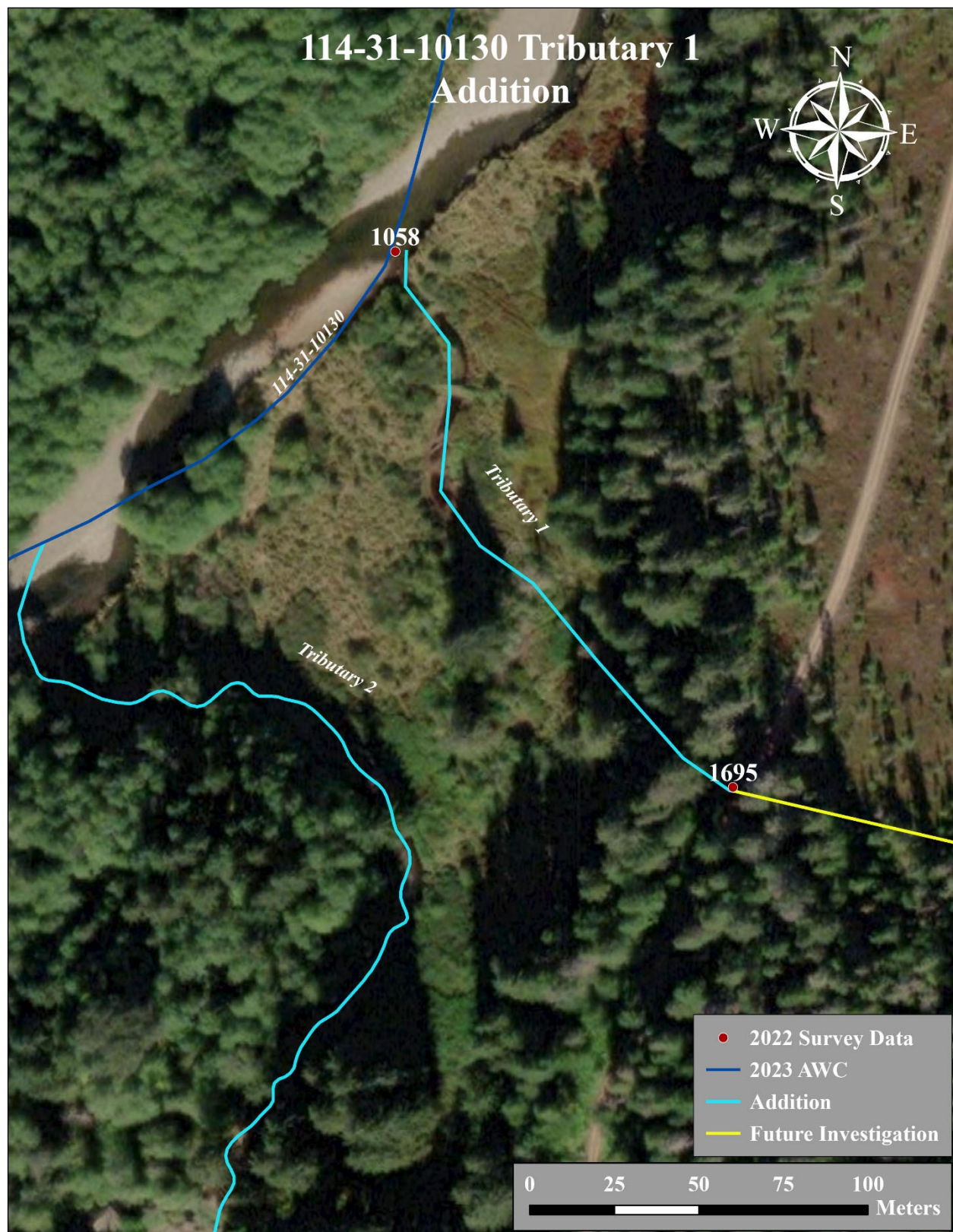


Figure 4.—114-31-10130 tributary 1 addition map.